

Texas Public Two-Year or Four-Year College Enrollment for Texas Public High School Graduates

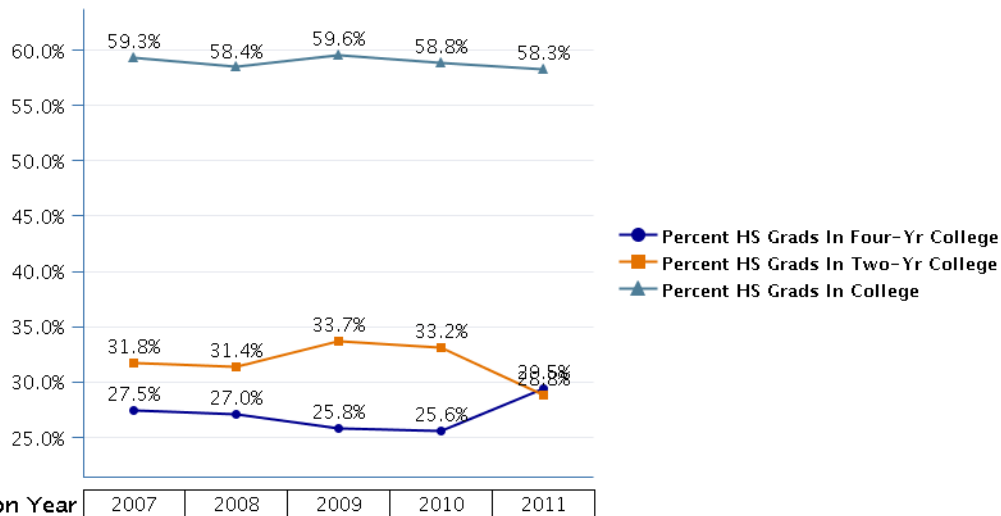
01 (Region I Edinburg)

For each educational service center (ESC) region, this report highlights Texas public high school (HS) graduates who enrolled in two-year or four-year Texas public colleges during the academic year immediately following high school graduation.

College Enrollment in Two-Year or Four-Year Texas Public Colleges

High School Graduation Year	All HS Grads	HS Grads In College	Percent HS Grads In College	HS Grads In Two-Yr College	Percent HS Grads In Two-Yr College	HS Grads In Four-Yr College	Percent HS Grads In Four-Yr College
2007	16,423	9,731	59.3%	5,218	31.8%	4,513	27.5%
2008	17,734	10,363	58.4%	5,566	31.4%	4,797	27.0%
2009	19,985	11,909	59.6%	6,744	33.7%	5,165	25.8%
2010	21,687	12,751	58.8%	7,193	33.2%	5,558	25.6%
2011	22,865	13,322	58.3%	6,587	28.8%	6,735	29.5%

Note: For the purposes of this report, if a student was enrolled simultaneously in both a two-year and four-year college during the academic year following high school graduation, the student was counted as being enrolled in the four-year college.



Texas Public Two-Year or Four-Year College Enrollment for Texas Public High School Graduates

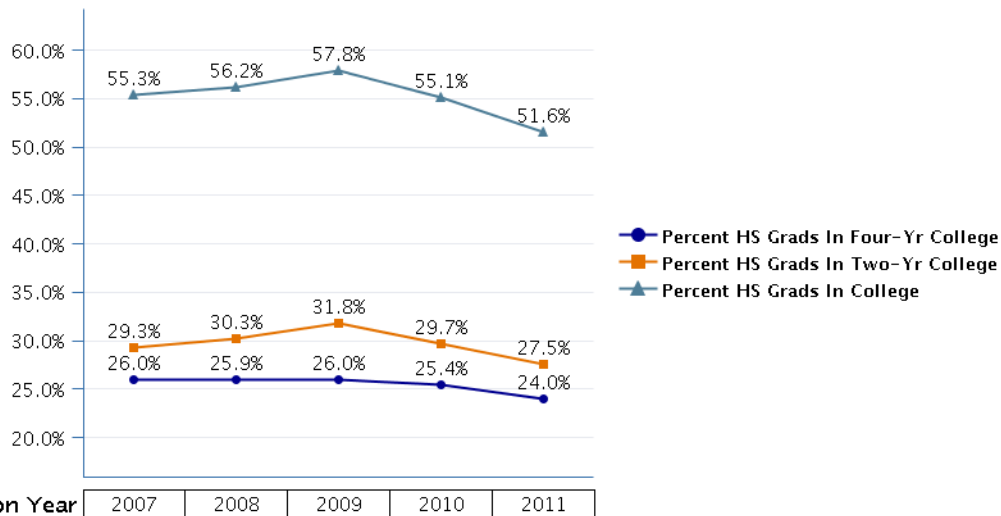
02 (Region II Corpus Christi)

For each educational service center (ESC) region, this report highlights Texas public high school (HS) graduates who enrolled in two-year or four-year Texas public colleges during the academic year immediately following high school graduation.

College Enrollment in Two-Year or Four-Year Texas Public Colleges

High School Graduation Year	All HS Grads	HS Grads In College	Percent HS Grads In College	HS Grads In Two-Yr College	Percent HS Grads In Two-Yr College	HS Grads In Four-Yr College	Percent HS Grads In Four-Yr College
2007	5,847	3,234	55.3%	1,714	29.3%	1,520	26.0%
2008	5,889	3,310	56.2%	1,782	30.3%	1,528	25.9%
2009	6,203	3,587	57.8%	1,975	31.8%	1,612	26.0%
2010	6,289	3,467	55.1%	1,870	29.7%	1,597	25.4%
2011	6,215	3,204	51.6%	1,710	27.5%	1,494	24.0%

Note: For the purposes of this report, if a student was enrolled simultaneously in both a two-year and four-year college during the academic year following high school graduation, the student was counted as being enrolled in the four-year college.



Texas Public Two-Year or Four-Year College Enrollment for Texas Public High School Graduates

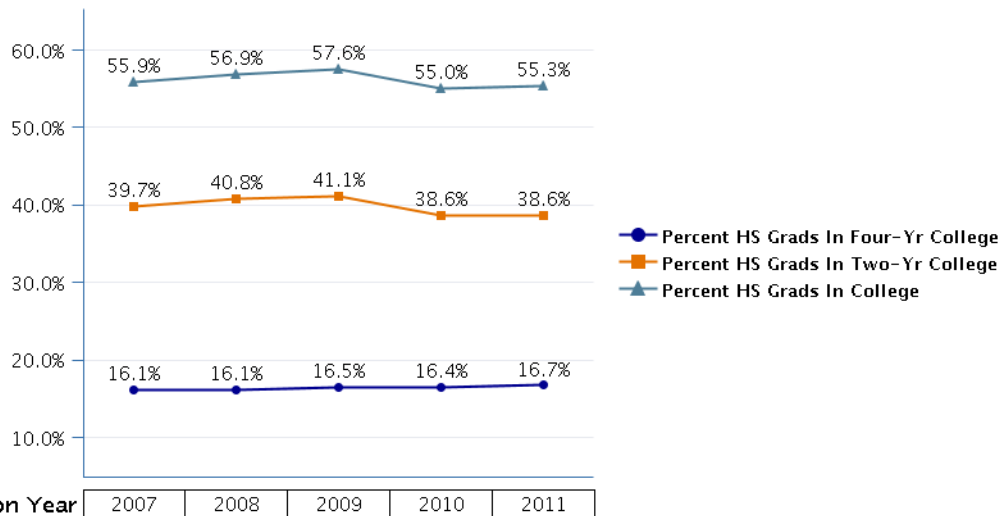
03 (Region III Victoria)

For each educational service center (ESC) region, this report highlights Texas public high school (HS) graduates who enrolled in two-year or four-year Texas public colleges during the academic year immediately following high school graduation.

College Enrollment in Two-Year or Four-Year Texas Public Colleges

High School Graduation Year	All HS Grads	HS Grads In College	Percent HS Grads In College	HS Grads In Two-Yr College	Percent HS Grads In Two-Yr College	HS Grads In Four-Yr College	Percent HS Grads In Four-Yr College
2007	3,183	1,779	55.9%	1,265	39.7%	514	16.1%
2008	3,185	1,813	56.9%	1,300	40.8%	513	16.1%
2009	3,214	1,851	57.6%	1,322	41.1%	529	16.5%
2010	3,288	1,810	55.0%	1,270	38.6%	540	16.4%
2011	3,334	1,844	55.3%	1,287	38.6%	557	16.7%

Note: For the purposes of this report, if a student was enrolled simultaneously in both a two-year and four-year college during the academic year following high school graduation, the student was counted as being enrolled in the four-year college.



Texas Public Two-Year or Four-Year College Enrollment for Texas Public High School Graduates

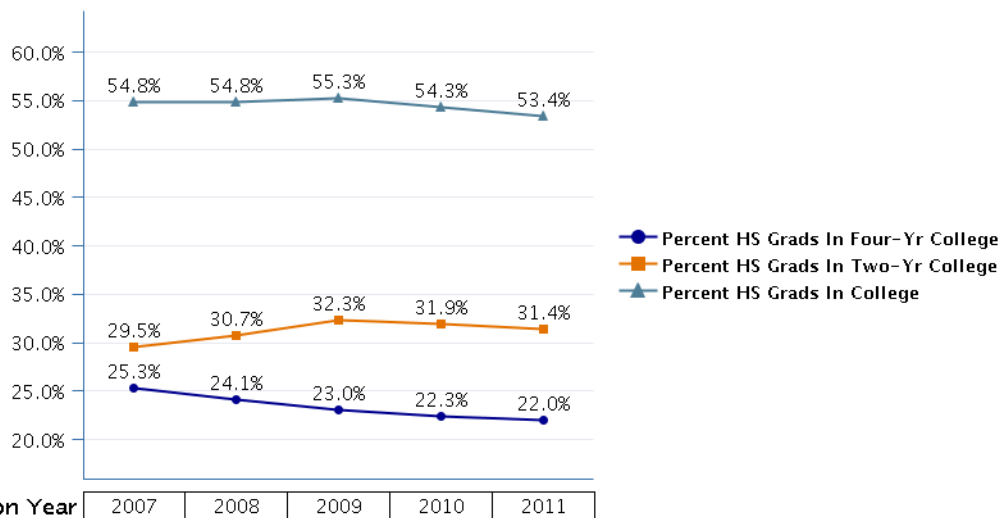
04 (Region IV Houston)

For each educational service center (ESC) region, this report highlights Texas public high school (HS) graduates who enrolled in two-year or four-year Texas public colleges during the academic year immediately following high school graduation.

College Enrollment in Two-Year or Four-Year Texas Public Colleges

High School Graduation Year	All HS Grads	HS Grads In College	Percent HS Grads In College	HS Grads In Two-Yr College	Percent HS Grads In Two-Yr College	HS Grads In Four-Yr College	Percent HS Grads In Four-Yr College
2007	50,752	27,823	54.8%	14,990	29.5%	12,833	25.3%
2008	53,277	29,190	54.8%	16,343	30.7%	12,847	24.1%
2009	56,035	30,979	55.3%	18,089	32.3%	12,890	23.0%
2010	60,360	32,748	54.3%	19,266	31.9%	13,482	22.3%
2011	62,815	33,534	53.4%	19,716	31.4%	13,818	22.0%

Note: For the purposes of this report, if a student was enrolled simultaneously in both a two-year and four-year college during the academic year following high school graduation, the student was counted as being enrolled in the four-year college.



Texas Public Two-Year or Four-Year College Enrollment for Texas Public High School Graduates

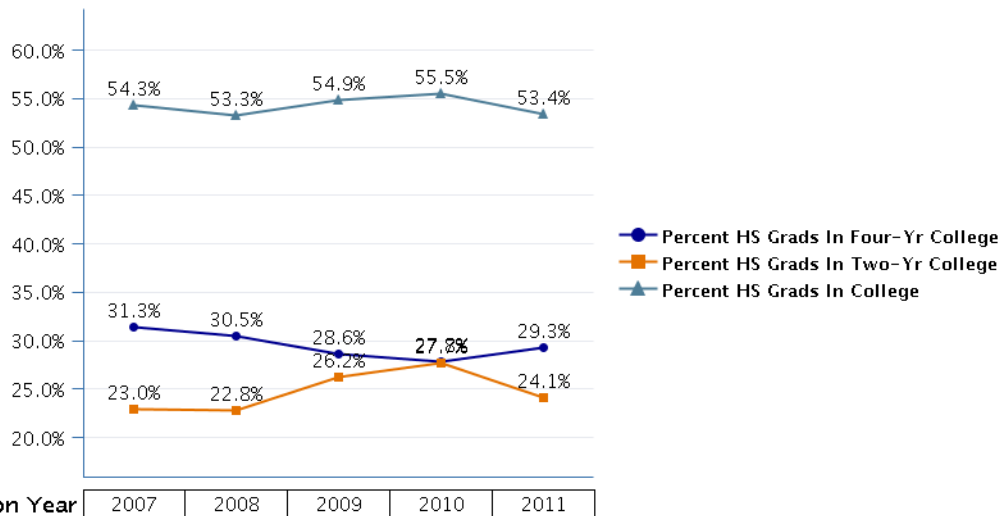
05 (Region V Beaumont)

For each educational service center (ESC) region, this report highlights Texas public high school (HS) graduates who enrolled in two-year or four-year Texas public colleges during the academic year immediately following high school graduation.

College Enrollment in Two-Year or Four-Year Texas Public Colleges

High School Graduation Year	All HS Grads	HS Grads In College	Percent HS Grads In College	HS Grads In Two-Yr College	Percent HS Grads In Two-Yr College	HS Grads In Four-Yr College	Percent HS Grads In Four-Yr College
2007	4,480	2,433	54.3%	1,029	23.0%	1,404	31.3%
2008	4,657	2,480	53.3%	1,061	22.8%	1,419	30.5%
2009	4,748	2,605	54.9%	1,245	26.2%	1,360	28.6%
2010	4,928	2,735	55.5%	1,367	27.2%	1,368	27.8%
2011	5,025	2,685	53.4%	1,211	24.1%	1,474	29.3%

Note: For the purposes of this report, if a student was enrolled simultaneously in both a two-year and four-year college during the academic year following high school graduation, the student was counted as being enrolled in the four-year college.



Texas Public Two-Year or Four-Year College Enrollment for Texas Public High School Graduates

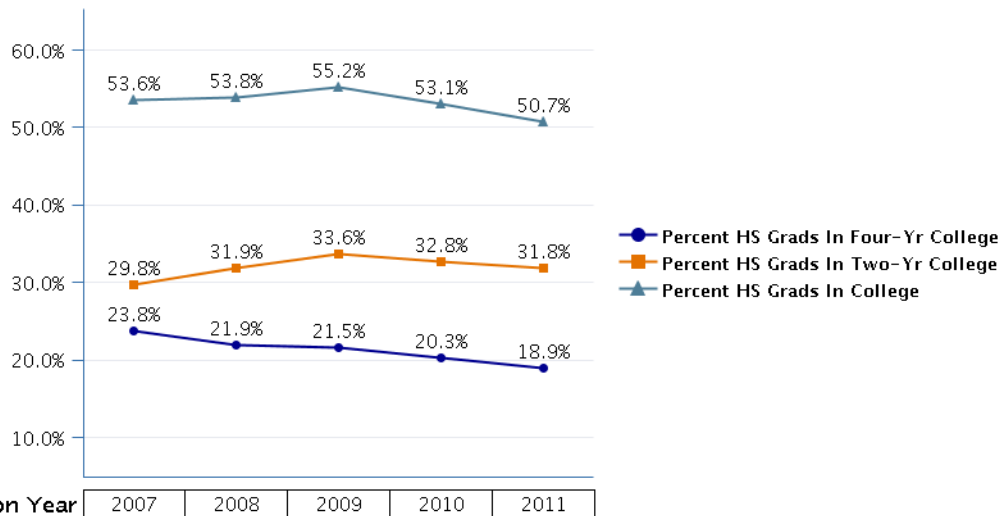
06 (Region VI Huntsville)

For each educational service center (ESC) region, this report highlights Texas public high school (HS) graduates who enrolled in two-year or four-year Texas public colleges during the academic year immediately following high school graduation.

College Enrollment in Two-Year or Four-Year Texas Public Colleges

High School Graduation Year	All HS Grads	HS Grads In College	Percent HS Grads In College	HS Grads In Two-Yr College	Percent HS Grads In Two-Yr College	HS Grads In Four-Yr College	Percent HS Grads In Four-Yr College
2007	8,975	4,807	53.6%	2,673	29.8%	2,134	23.8%
2008	9,288	4,999	53.8%	2,965	31.9%	2,034	21.9%
2009	9,505	5,244	55.2%	3,196	33.6%	2,048	21.5%
2010	10,128	5,374	53.1%	3,317	32.8%	2,057	20.3%
2011	10,215	5,174	50.7%	3,246	31.8%	1,928	18.9%

Note: For the purposes of this report, if a student was enrolled simultaneously in both a two-year and four-year college during the academic year following high school graduation, the student was counted as being enrolled in the four-year college.



Texas Public Two-Year or Four-Year College Enrollment for Texas Public High School Graduates

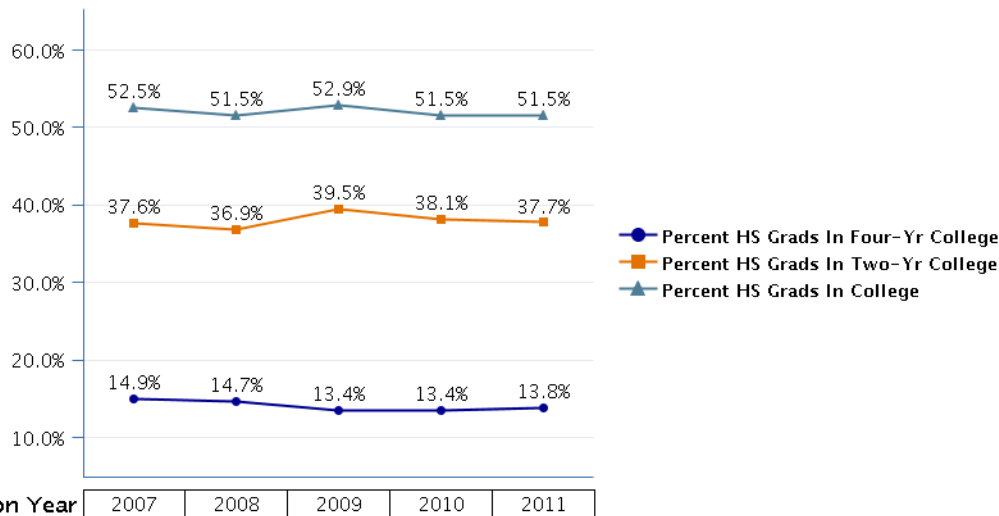
07 (Region VII Kilgore)

For each educational service center (ESC) region, this report highlights Texas public high school (HS) graduates who enrolled in two-year or four-year Texas public colleges during the academic year immediately following high school graduation.

College Enrollment in Two-Year or Four-Year Texas Public Colleges

High School Graduation Year	All HS Grads	HS Grads In College	Percent HS Grads In College	HS Grads In Two-Yr College	Percent HS Grads In Two-Yr College	HS Grads In Four-Yr College	Percent HS Grads In Four-Yr College
2007	9,434	4,950	52.5%	3,545	37.6%	1,405	14.9%
2008	9,592	4,944	51.5%	3,538	36.9%	1,406	14.7%
2009	9,875	5,223	52.9%	3,897	39.5%	1,326	13.4%
2010	10,123	5,212	51.5%	3,855	38.1%	1,357	13.4%
2011	10,227	5,267	51.5%	3,859	37.7%	1,408	13.8%

Note: For the purposes of this report, if a student was enrolled simultaneously in both a two-year and four-year college during the academic year following high school graduation, the student was counted as being enrolled in the four-year college.



Texas Public Two-Year or Four-Year College Enrollment for Texas Public High School Graduates

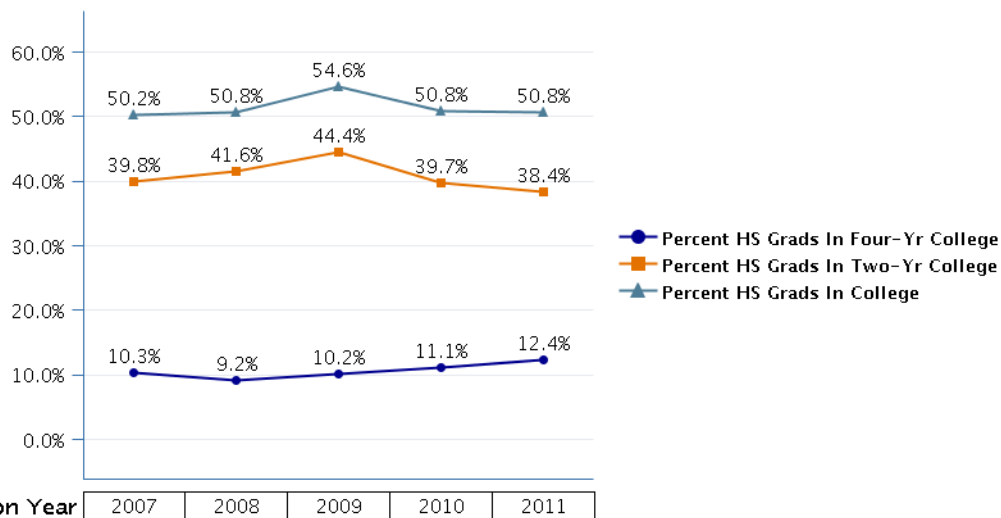
08 (Region VIII Mt Pleasant)

For each educational service center (ESC) region, this report highlights Texas public high school (HS) graduates who enrolled in two-year or four-year Texas public colleges during the academic year immediately following high school graduation.

College Enrollment in Two-Year or Four-Year Texas Public Colleges

High School Graduation Year	All HS Grads	HS Grads In College	Percent HS Grads In College	HS Grads In Two-Yr College	Percent HS Grads In Two-Yr College	HS Grads In Four-Yr College	Percent HS Grads In Four-Yr College
2007	3,363	1,688	50.2%	1,340	39.8%	348	10.3%
2008	3,430	1,741	50.8%	1,426	41.6%	315	9.2%
2009	3,508	1,916	54.6%	1,559	44.4%	357	10.2%
2010	3,628	1,842	50.8%	1,439	39.7%	403	11.1%
2011	3,686	1,871	50.8%	1,414	38.4%	457	12.4%

Note: For the purposes of this report, if a student was enrolled simultaneously in both a two-year and four-year college during the academic year following high school graduation, the student was counted as being enrolled in the four-year college.



Texas Public Two-Year or Four-Year College Enrollment for Texas Public High School Graduates

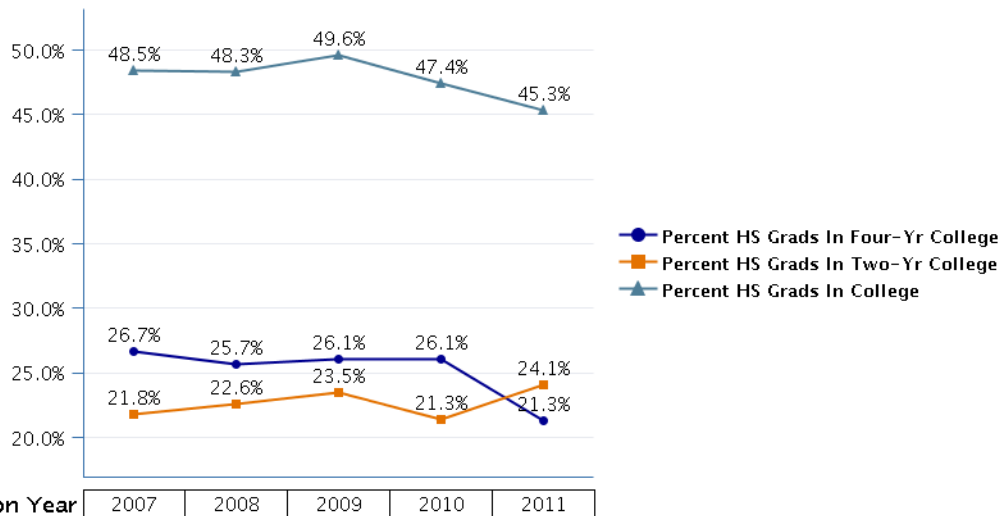
09 (Region IX Wichita Falls)

For each educational service center (ESC) region, this report highlights Texas public high school (HS) graduates who enrolled in two-year or four-year Texas public colleges during the academic year immediately following high school graduation.

College Enrollment in Two-Year or Four-Year Texas Public Colleges

High School Graduation Year	All HS Grads	HS Grads In College	Percent HS Grads In College	HS Grads In Two-Yr College	Percent HS Grads In Two-Yr College	HS Grads In Four-Yr College	Percent HS Grads In Four-Yr College
2007	2,497	1,210	48.5%	544	21.8%	666	26.7%
2008	2,556	1,234	48.3%	578	22.6%	656	25.7%
2009	2,440	1,210	49.6%	573	23.5%	637	26.1%
2010	2,586	1,227	47.4%	552	21.3%	675	26.1%
2011	2,512	1,139	45.3%	605	24.1%	534	21.3%

Note: For the purposes of this report, if a student was enrolled simultaneously in both a two-year and four-year college during the academic year following high school graduation, the student was counted as being enrolled in the four-year college.



Texas Public Two-Year or Four-Year College Enrollment for Texas Public High School Graduates

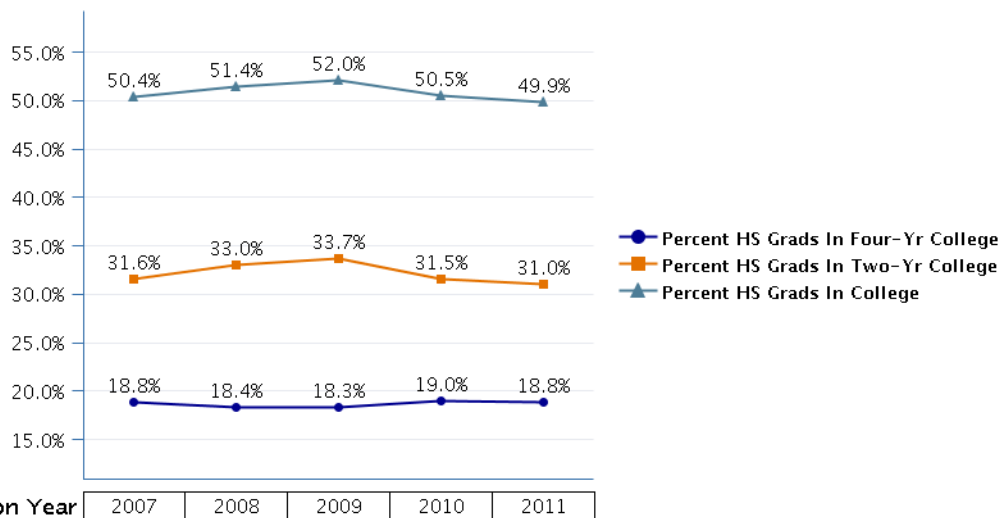
10 (Region X Richardson)

For each educational service center (ESC) region, this report highlights Texas public high school (HS) graduates who enrolled in two-year or four-year Texas public colleges during the academic year immediately following high school graduation.

College Enrollment in Two-Year or Four-Year Texas Public Colleges

High School Graduation Year	All HS Grads	HS Grads In College	Percent HS Grads In College	HS Grads In Two-Yr College	Percent HS Grads In Two-Yr College	HS Grads In Four-Yr College	Percent HS Grads In Four-Yr College
2007	35,760	18,020	50.4%	11,285	31.6%	6,735	18.8%
2008	37,622	19,329	51.4%	12,424	33.0%	6,905	18.4%
2009	39,517	20,562	52.0%	13,313	33.7%	7,249	18.3%
2010	41,628	21,020	50.5%	13,119	31.5%	7,901	19.0%
2011	43,697	21,787	49.9%	13,557	31.0%	8,230	18.8%

Note: For the purposes of this report, if a student was enrolled simultaneously in both a two-year and four-year college during the academic year following high school graduation, the student was counted as being enrolled in the four-year college.



Texas Public Two-Year or Four-Year College Enrollment for Texas Public High School Graduates

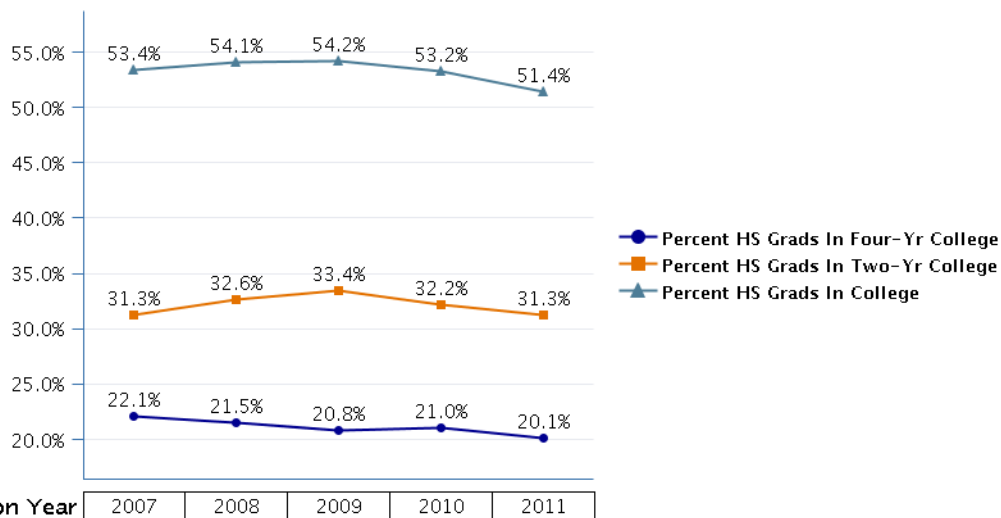
11 (Region XI Fort Worth)

For each educational service center (ESC) region, this report highlights Texas public high school (HS) graduates who enrolled in two-year or four-year Texas public colleges during the academic year immediately following high school graduation.

College Enrollment in Two-Year or Four-Year Texas Public Colleges

High School Graduation Year	All HS Grads	HS Grads In College	Percent HS Grads In College	HS Grads In Two-Yr College	Percent HS Grads In Two-Yr College	HS Grads In Four-Yr College	Percent HS Grads In Four-Yr College
2007	27,010	14,415	53.4%	8,448	31.3%	5,967	22.1%
2008	27,966	15,122	54.1%	9,122	32.6%	6,000	21.5%
2009	29,387	15,941	54.2%	9,815	33.4%	6,126	20.8%
2010	30,507	16,235	53.2%	9,830	32.2%	6,405	21.0%
2011	32,061	16,478	51.4%	10,025	31.3%	6,453	20.1%

Note: For the purposes of this report, if a student was enrolled simultaneously in both a two-year and four-year college during the academic year following high school graduation, the student was counted as being enrolled in the four-year college.



Texas Public Two-Year or Four-Year College Enrollment for Texas Public High School Graduates

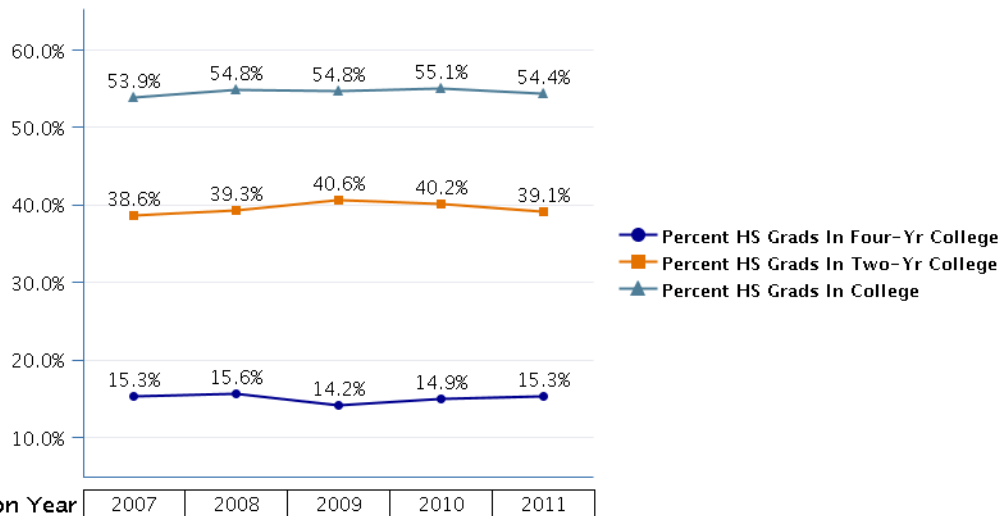
12 (Region XII Waco)

For each educational service center (ESC) region, this report highlights Texas public high school (HS) graduates who enrolled in two-year or four-year Texas public colleges during the academic year immediately following high school graduation.

College Enrollment in Two-Year or Four-Year Texas Public Colleges

High School Graduation Year	All HS Grads	HS Grads In College	Percent HS Grads In College	HS Grads In Two-Yr College	Percent HS Grads In Two-Yr College	HS Grads In Four-Yr College	Percent HS Grads In Four-Yr College
2007	7,997	4,309	53.9%	3,088	38.6%	1,221	15.3%
2008	8,096	4,437	54.8%	3,178	39.3%	1,259	15.6%
2009	8,277	4,533	54.8%	3,357	40.6%	1,176	14.2%
2010	8,850	4,875	55.1%	3,555	40.2%	1,320	14.9%
2011	9,104	4,956	54.4%	3,561	39.1%	1,395	15.3%

Note: For the purposes of this report, if a student was enrolled simultaneously in both a two-year and four-year college during the academic year following high school graduation, the student was counted as being enrolled in the four-year college.



Texas Public Two-Year or Four-Year College Enrollment for Texas Public High School Graduates

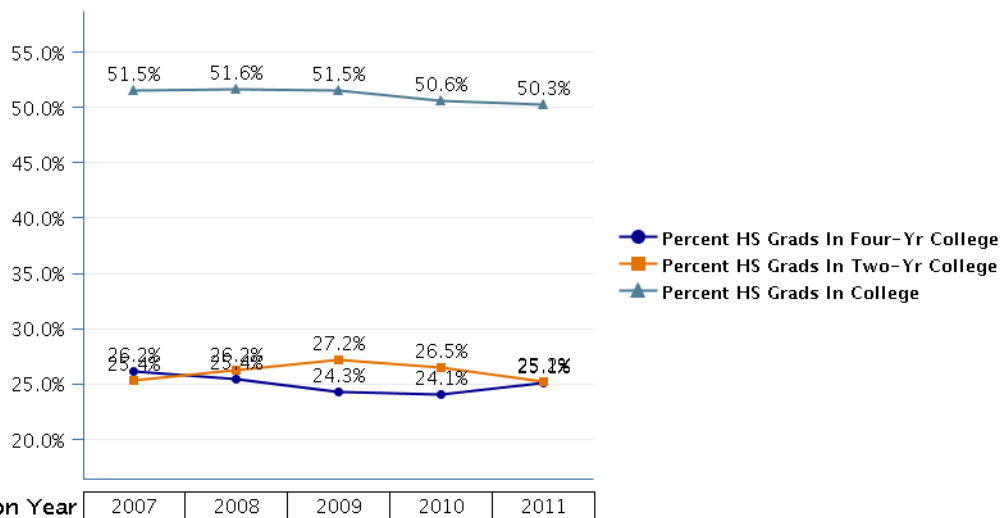
13 (Region XIII Austin)

For each educational service center (ESC) region, this report highlights Texas public high school (HS) graduates who enrolled in two-year or four-year Texas public colleges during the academic year immediately following high school graduation.

College Enrollment in Two-Year or Four-Year Texas Public Colleges

High School Graduation Year	All HS Grads	HS Grads In College	Percent HS Grads In College	HS Grads In Two-Yr College	Percent HS Grads In Two-Yr College	HS Grads In Four-Yr College	Percent HS Grads In Four-Yr College
2007	17,710	9,129	51.5%	4,494	25.4%	4,635	26.2%
2008	19,224	9,926	51.6%	5,037	26.2%	4,889	25.4%
2009	20,109	10,359	51.5%	5,464	27.2%	4,895	24.3%
2010	21,320	10,786	50.6%	5,647	26.5%	5,139	24.1%
2011	22,010	11,061	50.3%	5,543	25.2%	5,518	25.1%

Note: For the purposes of this report, if a student was enrolled simultaneously in both a two-year and four-year college during the academic year following high school graduation, the student was counted as being enrolled in the four-year college.



Texas Public Two-Year or Four-Year College Enrollment for Texas Public High School Graduates

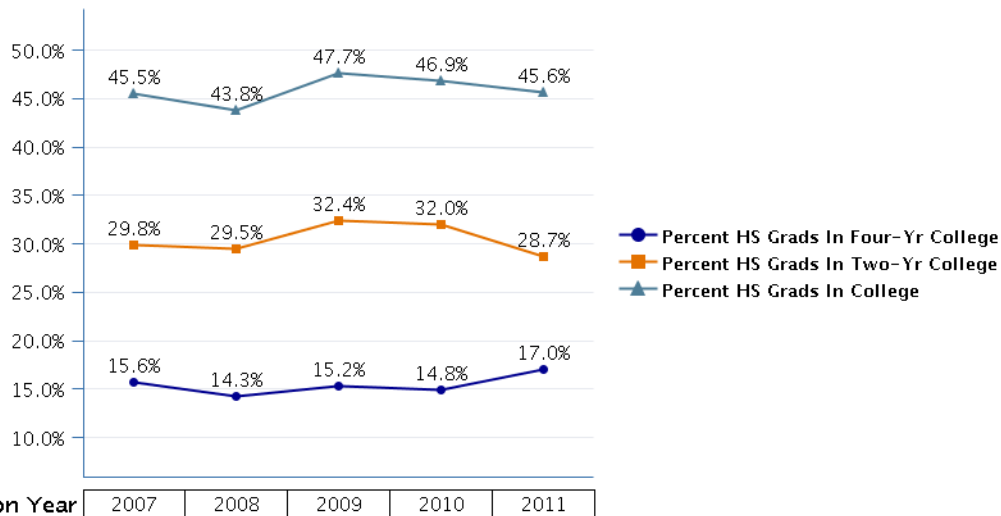
14 (Region XIV Abilene)

For each educational service center (ESC) region, this report highlights Texas public high school (HS) graduates who enrolled in two-year or four-year Texas public colleges during the academic year immediately following high school graduation.

College Enrollment in Two-Year or Four-Year Texas Public Colleges

High School Graduation Year	All HS Grads	HS Grads In College	Percent HS Grads In College	HS Grads In Two-Yr College	Percent HS Grads In Two-Yr College	HS Grads In Four-Yr College	Percent HS Grads In Four-Yr College
2007	3,300	1,501	45.5%	985	29.8%	516	15.6%
2008	3,317	1,452	43.8%	978	29.5%	474	14.3%
2009	3,531	1,683	47.7%	1,145	32.4%	538	15.2%
2010	3,700	1,734	46.9%	1,185	32.0%	549	14.8%
2011	3,836	1,751	45.6%	1,100	28.7%	651	17.0%

Note: For the purposes of this report, if a student was enrolled simultaneously in both a two-year and four-year college during the academic year following high school graduation, the student was counted as being enrolled in the four-year college.



Texas Public Two-Year or Four-Year College Enrollment for Texas Public High School Graduates

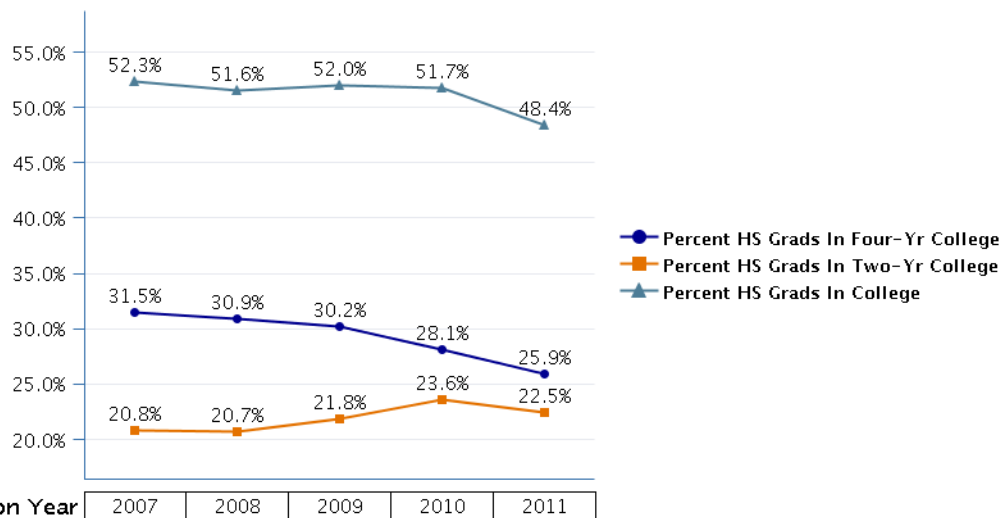
15 (Region XV San Angelo)

For each educational service center (ESC) region, this report highlights Texas public high school (HS) graduates who enrolled in two-year or four-year Texas public colleges during the academic year immediately following high school graduation.

College Enrollment in Two-Year or Four-Year Texas Public Colleges

High School Graduation Year	All HS Grads	HS Grads In College	Percent HS Grads In College	HS Grads In Two-Yr College	Percent HS Grads In Two-Yr College	HS Grads In Four-Yr College	Percent HS Grads In Four-Yr College
2007	2,963	1,551	52.3%	617	20.8%	934	31.5%
2008	2,889	1,490	51.6%	597	20.7%	893	30.9%
2009	2,995	1,558	52.0%	654	21.8%	904	30.2%
2010	3,149	1,628	51.7%	744	23.6%	884	28.1%
2011	3,068	1,485	48.4%	690	22.5%	795	25.9%

Note: For the purposes of this report, if a student was enrolled simultaneously in both a two-year and four-year college during the academic year following high school graduation, the student was counted as being enrolled in the four-year college.



Texas Public Two-Year or Four-Year College Enrollment for Texas Public High School Graduates

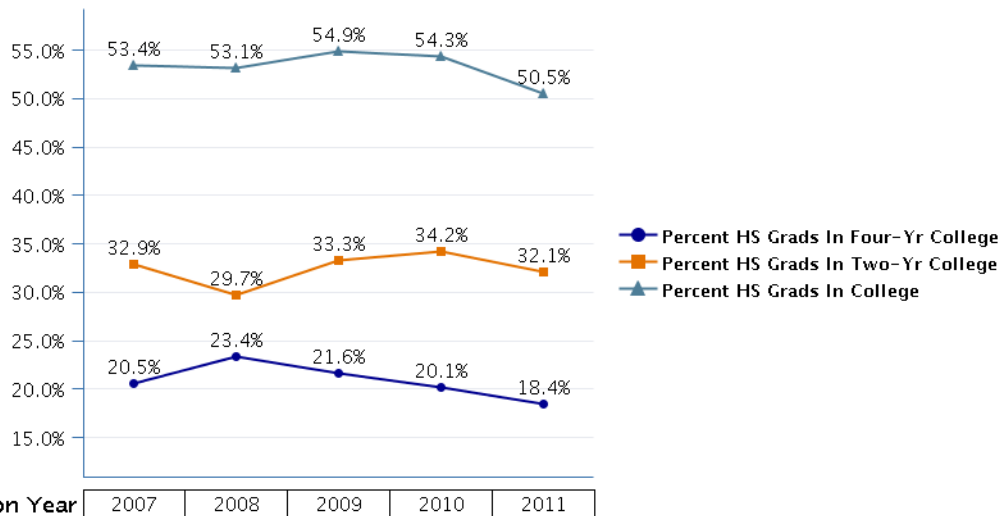
16 (Region XVI Amarillo)

For each educational service center (ESC) region, this report highlights Texas public high school (HS) graduates who enrolled in two-year or four-year Texas public colleges during the academic year immediately following high school graduation.

College Enrollment in Two-Year or Four-Year Texas Public Colleges

High School Graduation Year	All HS Grads	HS Grads In College	Percent HS Grads In College	HS Grads In Two-Yr College	Percent HS Grads In Two-Yr College	HS Grads In Four-Yr College	Percent HS Grads In Four-Yr College
2007	4,499	2,404	53.4%	1,481	32.9%	923	20.5%
2008	4,737	2,516	53.1%	1,409	29.7%	1,107	23.4%
2009	4,868	2,674	54.9%	1,621	33.3%	1,053	21.6%
2010	5,003	2,717	54.3%	1,710	34.2%	1,007	20.1%
2011	5,075	2,564	50.5%	1,628	32.1%	936	18.4%

Note: For the purposes of this report, if a student was enrolled simultaneously in both a two-year and four-year college during the academic year following high school graduation, the student was counted as being enrolled in the four-year college.



Texas Public Two-Year or Four-Year College Enrollment for Texas Public High School Graduates

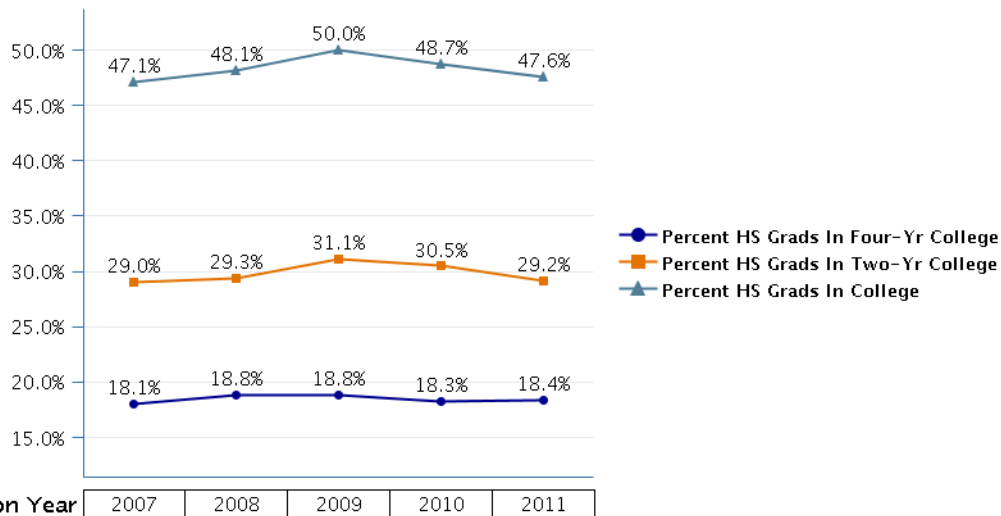
17 (Region XVII Lubbock)

For each educational service center (ESC) region, this report highlights Texas public high school (HS) graduates who enrolled in two-year or four-year Texas public colleges during the academic year immediately following high school graduation.

College Enrollment in Two-Year or Four-Year Texas Public Colleges

High School Graduation Year	All HS Grads	HS Grads In College	Percent HS Grads In College	HS Grads In Two-Yr College	Percent HS Grads In Two-Yr College	HS Grads In Four-Yr College	Percent HS Grads In Four-Yr College
2007	4,525	2,130	47.1%	1,313	29.0%	817	18.1%
2008	4,638	2,233	48.1%	1,360	29.3%	873	18.8%
2009	4,460	2,228	50.0%	1,389	31.1%	839	18.8%
2010	4,709	2,295	48.7%	1,435	30.5%	860	18.3%
2011	4,700	2,236	47.6%	1,372	29.2%	864	18.4%

Note: For the purposes of this report, if a student was enrolled simultaneously in both a two-year and four-year college during the academic year following high school graduation, the student was counted as being enrolled in the four-year college.



Texas Public Two-Year or Four-Year College Enrollment for Texas Public High School Graduates

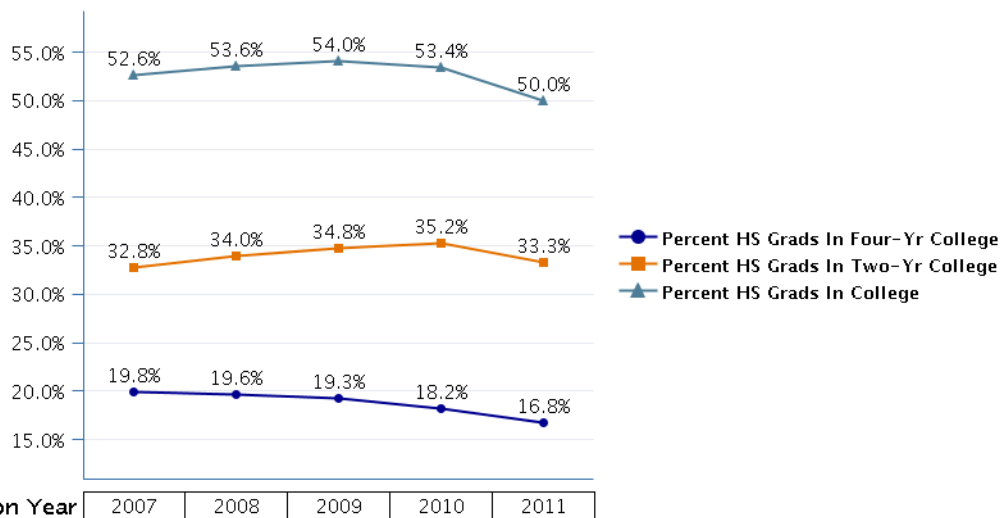
18 (Region XVIII Midland)

For each educational service center (ESC) region, this report highlights Texas public high school (HS) graduates who enrolled in two-year or four-year Texas public colleges during the academic year immediately following high school graduation.

College Enrollment in Two-Year or Four-Year Texas Public Colleges

High School Graduation Year	All HS Grads	HS Grads In College	Percent HS Grads In College	HS Grads In Two-Yr College	Percent HS Grads In Two-Yr College	HS Grads In Four-Yr College	Percent HS Grads In Four-Yr College
2007	4,224	2,222	52.6%	1,384	32.8%	838	19.8%
2008	4,153	2,226	53.6%	1,411	34.0%	815	19.6%
2009	4,336	2,343	54.0%	1,507	34.8%	836	19.3%
2010	4,445	2,375	53.4%	1,566	35.2%	809	18.2%
2011	4,624	2,313	50.0%	1,538	33.3%	775	16.8%

Note: For the purposes of this report, if a student was enrolled simultaneously in both a two-year and four-year college during the academic year following high school graduation, the student was counted as being enrolled in the four-year college.



Texas Public Two-Year or Four-Year College Enrollment for Texas Public High School Graduates

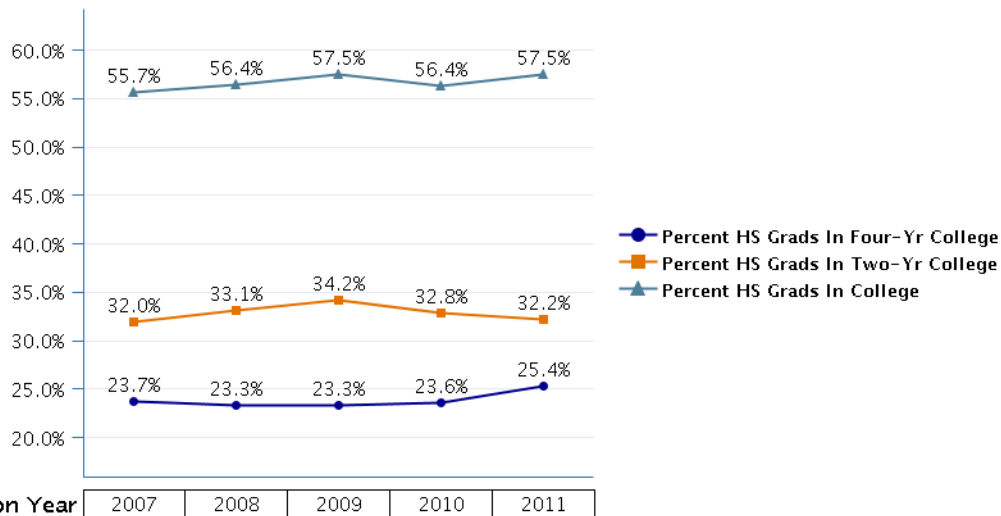
19 (Region XIX El Paso)

For each educational service center (ESC) region, this report highlights Texas public high school (HS) graduates who enrolled in two-year or four-year Texas public colleges during the academic year immediately following high school graduation.

College Enrollment in Two-Year or Four-Year Texas Public Colleges

High School Graduation Year	All HS Grads	HS Grads In College	Percent HS Grads In College	HS Grads In Two-Yr College	Percent HS Grads In Two-Yr College	HS Grads In Four-Yr College	Percent HS Grads In Four-Yr College
2007	9,092	5,063	55.7%	2,907	32.0%	2,156	23.7%
2008	9,889	5,578	56.4%	3,269	33.1%	2,309	23.3%
2009	10,210	5,871	57.5%	3,495	34.2%	2,376	23.3%
2010	11,361	6,402	56.4%	3,726	32.8%	2,676	23.6%
2011	11,736	6,753	57.5%	3,777	32.2%	2,976	25.4%

Note: For the purposes of this report, if a student was enrolled simultaneously in both a two-year and four-year college during the academic year following high school graduation, the student was counted as being enrolled in the four-year college.



Texas Public Two-Year or Four-Year College Enrollment for Texas Public High School Graduates

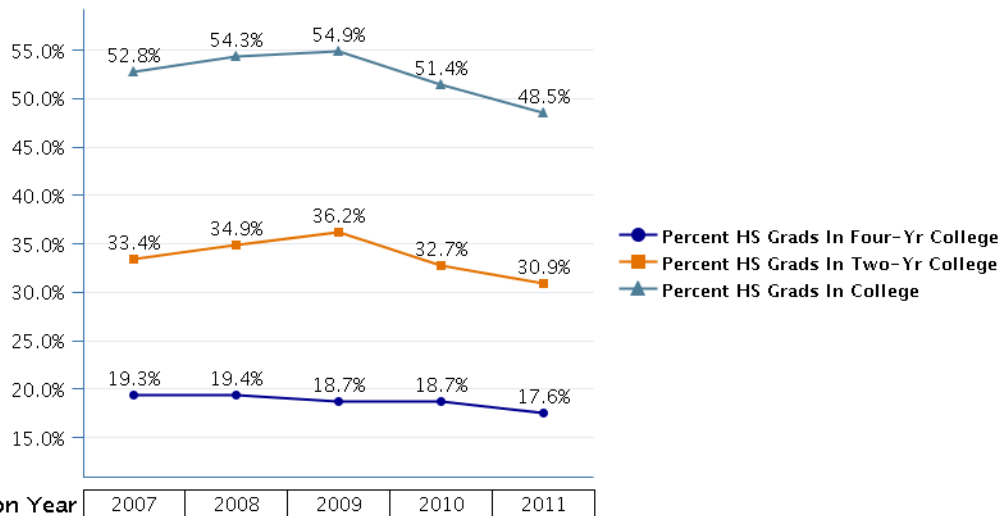
20 (Region XX San Antonio)

For each educational service center (ESC) region, this report highlights Texas public high school (HS) graduates who enrolled in two-year or four-year Texas public colleges during the academic year immediately following high school graduation.

College Enrollment in Two-Year or Four-Year Texas Public Colleges

High School Graduation Year	All HS Grads	HS Grads In College	Percent HS Grads In College	HS Grads In Two-Yr College	Percent HS Grads In Two-Yr College	HS Grads In Four-Yr College	Percent HS Grads In Four-Yr College
2007	19,159	10,109	52.8%	6,406	33.4%	3,703	19.3%
2008	19,982	10,853	54.3%	6,976	34.9%	3,877	19.4%
2009	21,072	11,572	54.9%	7,634	36.2%	3,938	18.7%
2010	22,831	11,736	51.4%	7,469	32.7%	4,267	18.7%
2011	23,776	11,531	48.5%	7,351	30.9%	4,180	17.6%

Note: For the purposes of this report, if a student was enrolled simultaneously in both a two-year and four-year college during the academic year following high school graduation, the student was counted as being enrolled in the four-year college.



Texas Public Two-Year or Four-Year College Enrollment for Texas Public High School Graduates About the Data

Purpose	This report shows the college enrollment rate of Texas public high school (HS) graduates in two-year and four-year Texas public colleges for the academic year following high school graduation. The data are reported at the Educational Service Center (ESC) regional level and at the statewide level.
Data Sources	<p>High school graduate data used for this report come from the Texas Education Agency's Public Education Information Management System (PEIMS). The data source for enrollment in Texas public 2-year and 4-year higher education institutions is the Texas Higher Education Coordinating Board (THECB).</p> <p>Note: Data used in this report represent only Texas public 2-year and 4-year colleges and do not include out-of-state or Texas private higher education institutions.</p>
Data Elements	
All HS Grads	The total number of high school students who graduated from Texas independent school districts, charter school districts, or common school districts.
Two-Year or Four-Year College	Indicates that the Texas public institution of higher education offers either a two-year degree (such as an Associate degree) or a 4-year degree (such as a Baccalaureate degree.) A two-year degree normally requires at least two years of full-time equivalent college work. A four-year degree normally requires at least four years of full-time undergraduate college work.
College Enrollment	<p>The number or percentage of Texas public high school graduates who enrolled in a Texas public 2-year or 4-year institution of higher education as reported by the THECB for the academic year following high school graduation.</p> <p>For the purposes of this report, if a student was enrolled simultaneously in both a two-year and four-year college during the academic year following high school graduation, the student was counted as being enrolled in the four-year college.</p>
Education Service Center (ESC) Region	<p>Texas is divided into 20 geographic regions that are served by regional Education Service Centers (ESCs). Education service center region denotes the region from which the school district receives educational services. This is not necessarily the service center assignment based upon geographic location, although in most cases they are the same.</p> <p>Infrequently, a school district will change from one service region to another, usually because the service center is closer or more conveniently located to the school district. In this case, when multiple years of data are presented in a report, the school district's data will be presented as part of the ESC that served the school district for a specific school year.</p>