

Texas Public College Enrollment for Texas Public High School Graduates by Limited English Proficient (LEP) Status

This report highlights limited English proficient (LEP) Texas public high school (HS) graduates enrolled in two-year or four-year Texas public colleges during the academic year immediately following high school graduation. For high school graduation years 2007-2011, the number of all students enrolled in college increased, but the percent of all high school graduates enrolled in Texas public colleges has not increased. Over these five years, Ever-LEP students (students identified as LEP at some time during their public school enrollment) enrolled in Texas public colleges at lower rates than Never-LEP students but the number of students enrolled and rates of enrollment for LEP students increased slightly more than for Never-LEP students. There was also variation between rates of college enrollment in Texas public two-year and four-year colleges based on student LEP status.

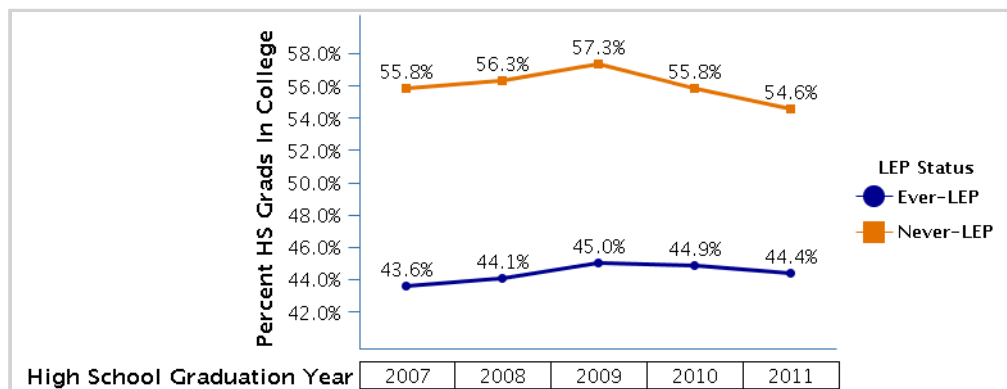
College Enrollment of All High School Graduates in All Texas Public Colleges

	All HS Grads	HS Grads In College	Percent HS Grads In College
High School Graduation Year			
2007	241,193	128,508	53.3%
2008	252,121	135,236	53.6%
2009	264,275	143,848	54.4%
2010	280,520	148,969	53.1%
2011	290,581	150,955	51.9%

College Enrollment in Texas Public Colleges by LEP Status

LEP Status	HS Grads		HS Grads In College		Percent HS Grads In College	
	Ever-LEP	Never-LEP	Ever-LEP	Never-LEP	Ever-LEP	Never-LEP
High School Graduation Year						
2007	50,247	190,946	21,923	106,585	43.6%	55.8%
2008	55,400	196,721	24,430	110,806	44.1%	56.3%
2009	62,356	201,919	28,063	115,785	45.0%	57.3%
2010	69,914	210,606	31,386	117,583	44.9%	55.8%
2011	75,068	215,513	33,310	117,645	44.4%	54.6%

Note: "Ever-LEP" indicates high school graduates designated as LEP at some time during their Texas public school enrollment, and "Never-LEP" indicates high school graduates not designated as LEP at some time during their Texas public school enrollment.





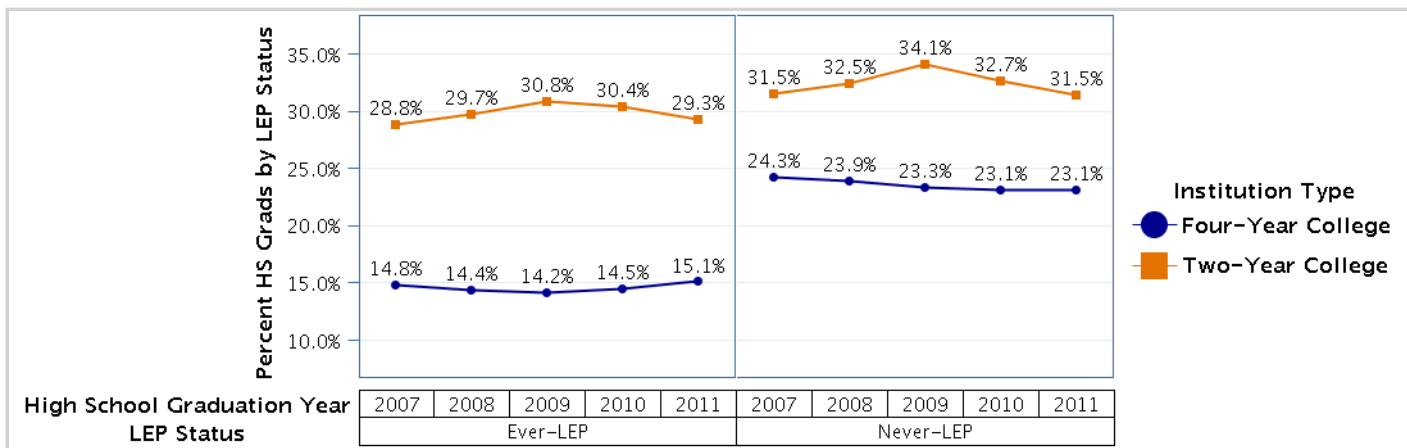
Texas Public College Enrollment for Texas Public High School Graduates by Limited English Proficient (LEP) Status

College Enrollment in Two-Year and Four-Year Texas Public Colleges by LEP Status

LEP Status	HS Grads		HS Grads In College		HS Grads In Two-Yr College		HS Grads In Four-Yr College	
	Ever-LEP	Never-LEP	Ever-LEP	Never-LEP	Ever-LEP	Never-LEP	Ever-LEP	Never-LEP
High School Graduation Year								
2007	50,247	190,946	21,923	106,585	14,491	60,235	7,432	46,350
2008	55,400	196,721	24,430	110,806	16,462	63,858	7,968	46,948
2009	62,356	201,919	28,063	115,785	19,230	68,764	8,833	47,021
2010	69,914	210,606	31,386	117,583	21,245	68,870	10,141	48,713
2011	75,068	215,513	33,310	117,645	21,974	67,803	11,336	49,842

LEP Status	Percent HS Grads In Two-Yr College		Percent HS Grads In Four-Yr College	
	Ever-LEP	Never-LEP	Ever-LEP	Never-LEP
High School Graduation Year				
2007	28.8%	31.5%	14.8%	24.3%
2008	29.7%	32.5%	14.4%	23.9%
2009	30.8%	34.1%	14.2%	23.3%
2010	30.4%	32.7%	14.5%	23.1%
2011	29.3%	31.5%	15.1%	23.1%

Notes: 1. For the purposes of this report, if a student was enrolled simultaneously in both a two-year and four-year college during the fall semester, the student was counted as being enrolled in a four-year college. 2. "Ever-LEP" indicates high school graduates designated as LEP at some time during their Texas public school enrollment, and "Never-LEP" indicates high school graduates not designated as LEP at some time during their Texas public school enrollment.



Texas Public College Enrollment for Texas Public High School Graduates by Limited English Proficient (LEP) Status About the Data

Purpose	<p>This report shows the college enrollment rate of Texas public high school (HS) graduates by Limited English Proficient (LEP) status. In this report, students who at some time during their Texas public school enrollment were designated as LEP are categorized as Ever-LEP and those students who were never designated as LEP are categorized as Never-LEP. College enrollment numbers and percents consist of enrollment during the fall semester following high school graduation in Texas public institutions of higher education that offer two-year and/or four-year degrees. The data are reported at the regional Educational Service Center (ESC or Region) level and at the statewide level.</p> <p>The report presents information about LEP students who graduate from high school and enroll in college. Information on the rate at which Ever-LEP graduates go to two-year or four-year colleges compared to Never-LEP graduates is provided.</p>
Data Sources	<p>High school graduate data used for this report come from the Texas Public Education Information Management System (PEIMS). The data source for enrollment in Texas public two-year and four-year higher education institutions is the Texas Higher Education Coordinating Board (THECB).</p> <p>Note: Data used in this report represent only Texas public 2-year and 4-year colleges and do not include out-of-state or Texas private higher education institutions.</p>
Data Elements	<p>Note: In this report, all percentages are based on the number of Texas public high school graduates.</p>
Two- or Four-Year College Type	<p>College type indicates that the Texas public institution of higher education offers either a two-year degree (such as an Associate degree) or a four-year degree (such as a Baccalaureate degree.) A two-year degree normally requires at least two years of full-time equivalent college work. A four-year degree normally requires at least four years of full-time undergraduate college work.</p> <p>For the purposes of this report, if a student was enrolled simultaneously in both a two-year and four-year college during the fall semester, the student was counted as being enrolled in a four-year college.</p>
College Enrollment	<p>The number of students enrolled in a Texas public two-year or four-year institution of higher education as reported by the THECB for the fall semester following high school graduation.</p>
LEP Status	<p>Indicates whether the high school graduate was designated as Limited English Proficient (LEP) at any time during his/her Texas public school enrollment.</p>

Texas Public College Enrollment for Texas Public High School Graduates by Limited English Proficient (LEP) Status About the Data

	<p>Ever-LEP indicates that the high school graduate was designated as LEP at some time during his/her Texas public school enrollment.</p> <p>Never-LEP indicates that the high school graduate was not designated as LEP at any time during his/her Texas public school enrollment.</p>
Regional Education Service Center (ESC) or Region	<p>Texas is divided into 20 geographic regions that are served by regional Education Service Centers (ESCs). Education service center region denotes the region from which the school district receives educational services. This is not necessarily the service center assignment based upon geographic location, although in most cases they are the same.</p> <p>Infrequently, a school district will change from one service region to another, usually because the service center is closer or more conveniently located to the school district. In this case, when multiple years of data are presented in a report, the school district's data will be presented as part of the ESC that served the school district for a specific school year.</p>