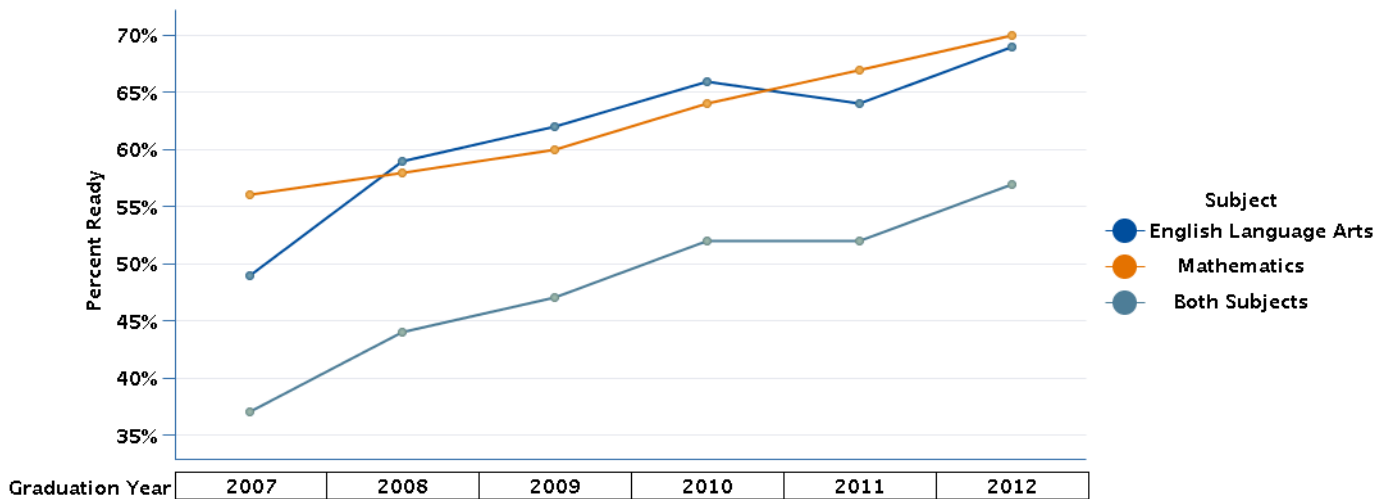


Texas Public High School College Ready Graduates

In this report, the term 'College Ready' refers to the Texas Education Agency's Academic Excellence Indicator System (AEIS) college ready graduates designation. To be considered college ready by this indicator, a graduate must have met the college ready criteria on the Texas Assessment of Knowledge and Skills (TAKS) exit level test or the SAT test or the ACT test.

Texas Public High School College Ready Graduates by Subject

Graduation Year	Percent Ready					
	2007	2008	2009	2010	2011	2012
Subject						
English Language Arts	49%	59%	62%	66%	64%	69%
Mathematics	56%	58%	60%	64%	67%	70%
Both Subjects	37%	44%	47%	52%	52%	57%



Texas Public High School College Ready Graduates

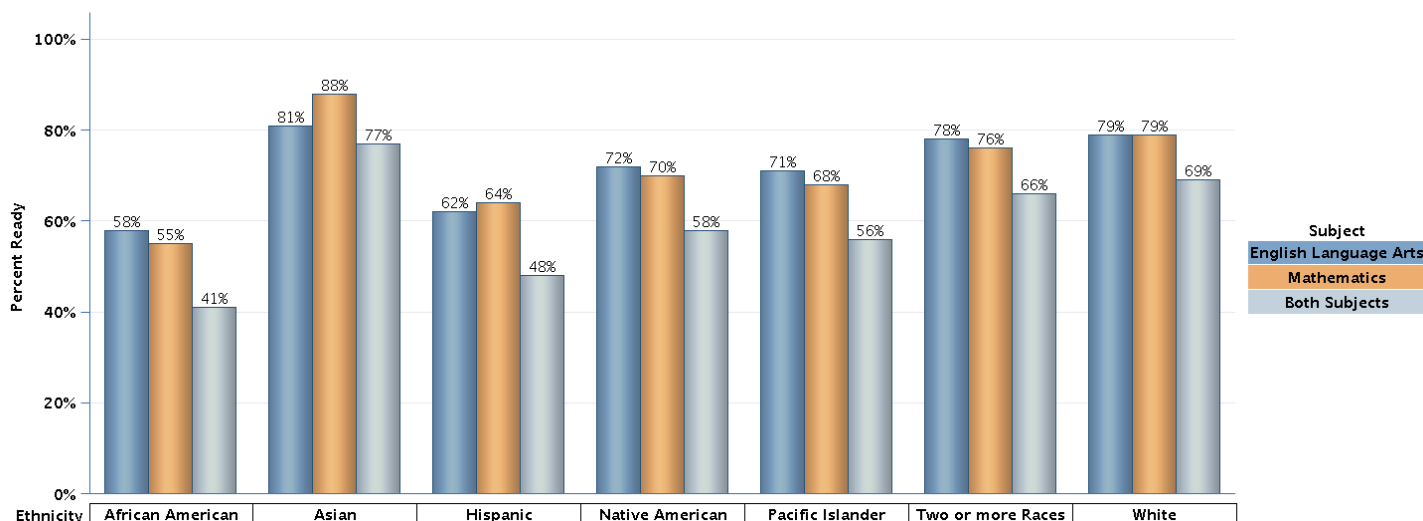
Texas Public High School College Ready Graduates by Ethnicity and Subject

Graduation Year	Percent Ready								
	2007			2008			2009		
Subject	English Language Arts	Mathematics	Both Subjects	English Language Arts	Mathematics	Both Subjects	English Language Arts	Mathematics	Both Subjects
Ethnicity									
African American	34%	33%	19%	44%	37%	25%	49%	41%	29%
Asian/Pacific Islander	67%	77%	60%	73%	80%	66%	75%	82%	69%
Hispanic	38%	45%	25%	48%	48%	32%	52%	50%	35%
Native American	50%	59%	40%	64%	65%	51%	67%	65%	53%
White	59%	66%	49%	70%	70%	57%	72%	71%	60%

Graduation Year	Percent Ready								
	2010			2011			2012		
Subject	English Language Arts	Mathematics	Both Subjects	English Language Arts	Mathematics	Both Subjects	English Language Arts	Mathematics	Both Subjects
Ethnicity									
African American	53%	46%	34%	52%	50%	36%	58%	55%	41%
Asian	79%	86%	74%	79%	86%	75%	81%	88%	77%
Hispanic	58%	57%	42%	55%	60%	42%	62%	64%	48%
Native American	69%	65%	55%	67%	71%	57%	72%	70%	58%
Pacific Islander	75%	70%	60%	68%	70%	55%	71%	68%	56%
Two or more Races	75%	70%	61%	74%	73%	61%	78%	76%	66%
White	77%	75%	66%	74%	78%	65%	79%	79%	69%

Note: In October 2007, the United States Department of Education (USDE) issued their final guidance to educational institutions on the adoption of new federal standards for collecting and reporting ethnicity and race data for students and staff. In this report, graduation year 2010 and forward are based on the new federal standard and prior years are based on the old standard. See the glossary at the end of this report for more detail.

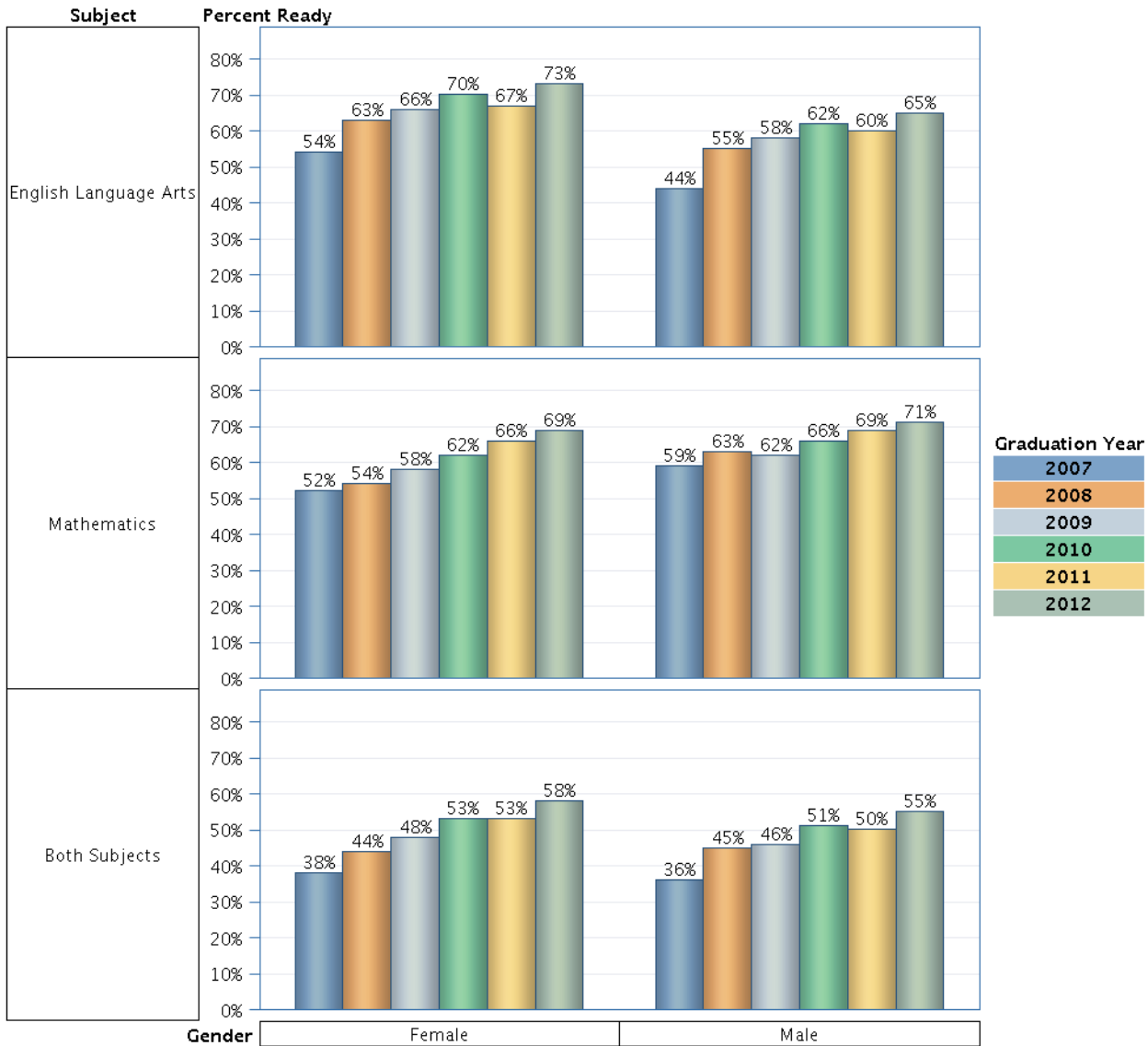
2012 Texas Public High School College Ready Graduates by Ethnicity and Subject



Texas Public High School College Ready Graduates

Texas Public High School College Ready Graduates by Gender and Subject

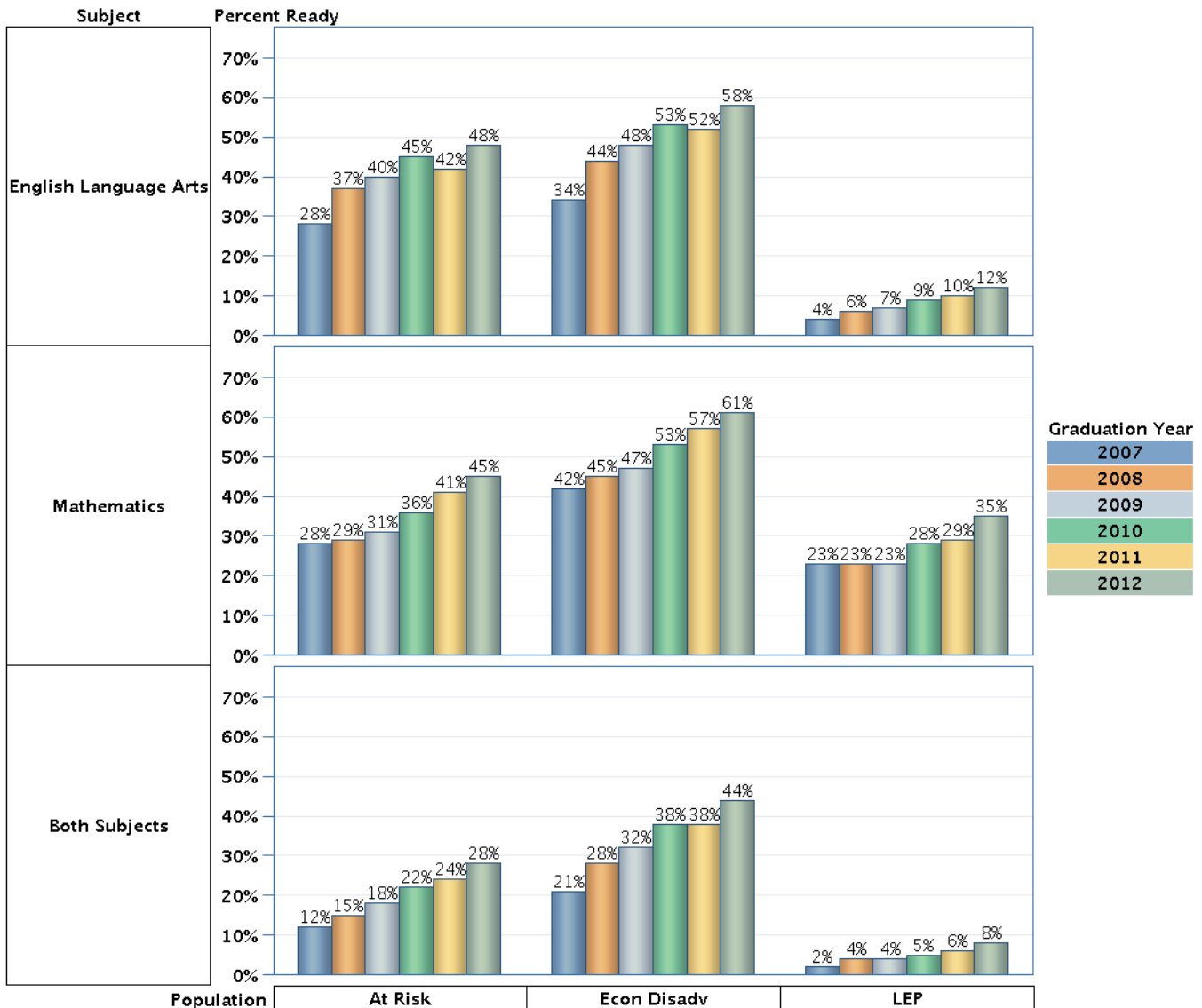
Gender	Percent Ready											
	Female						Male					
Graduation Year	2007	2008	2009	2010	2011	2012	2007	2008	2009	2010	2011	2012
Subject												
English Language Arts	54%	63%	66%	70%	67%	73%	44%	55%	58%	62%	60%	65%
Mathematics	52%	54%	58%	62%	66%	69%	59%	63%	62%	66%	69%	71%
Both Subjects	38%	44%	48%	53%	53%	58%	36%	45%	46%	51%	50%	55%



Texas Public High School College Ready Graduates

Texas Public High School College Ready Graduates by Population and Subject

Graduation Year		Percent Ready					
		2007	2008	2009	2010	2011	2012
At Risk	English Language Arts	28%	37%	40%	45%	42%	48%
	Mathematics	28%	29%	31%	36%	41%	45%
	Both Subjects	12%	15%	18%	22%	24%	28%
Econ Disadv	English Language Arts	34%	44%	48%	53%	52%	58%
	Mathematics	42%	45%	47%	53%	57%	61%
	Both Subjects	21%	28%	32%	38%	38%	44%
LEP	English Language Arts	4%	6%	7%	9%	10%	12%
	Mathematics	23%	23%	23%	28%	29%	35%
	Both Subjects	2%	4%	4%	5%	6%	8%



Texas Public High School College Ready Graduates

<p>Purpose</p>	<p>This report provides insight into Texas high school graduates who are considered college ready by the Texas Education Agency's Academic Excellence Indicator System (AEIS) based on their English language arts (ELA) skills and mathematics (Math) skills.</p> <p>High school graduates are examined by ethnicity, gender, economically disadvantaged status, Limited English Proficiency (LEP), and at risk status.</p> <p>This is a multi-year report that tracks the trends of high school college ready graduates from graduation year 2007 to 2012.</p>																		
<p>Data Source</p>	<p>Data in this report come from the Texas Education Agency's Academic Excellence Indicator System (AEIS). For more information about AEIS College Ready Graduates, visit the AEIS reports on the TEA website: http://ritter.tea.state.tx.us/perfreport/aeis/index.html .</p> <p>Data in this report are reported at the statewide levels</p>																		
<p>Data Elements</p>																			
<p>At Risk</p>	<p>A student is identified as at risk of dropping out of school based on state defined criteria (§TEC 29.081).</p>																		
<p>College Ready Graduates</p>	<p>To be considered college ready as defined by this indicator, a graduate must have met or exceeded the college ready criteria on the TAKS exit-level test, or the SAT test, or the ACT test. The criteria for each are:</p> <table border="1" data-bbox="488 1262 1425 1598"> <thead> <tr> <th>Subject</th> <th>Exit-level TAKS</th> <th></th> <th>SAT</th> <th></th> <th>ACT</th> </tr> </thead> <tbody> <tr> <td>ELA</td> <td>>= 2200 scale score on ELA test AND a "3" or higher on essay</td> <td>OR</td> <td>>=500 on Critical Reading AND >=1070 Total</td> <td>OR</td> <td>>= 19 on English AND >= 23 Composite</td> </tr> <tr> <td>Math</td> <td>>= 2200 scale score on mathematics test</td> <td>OR</td> <td>>=500 on Math AND >=1070 Total</td> <td>OR</td> <td>>= 19 on Math AND >= 23 Composite</td> </tr> </tbody> </table> <p>Three values are calculated for this indicator:</p> <p>(1) English Language Arts: The percent of graduates who scored at or above the criterion score on the TAKS, SAT, or ACT English language arts tests.</p> <p>(2) Mathematics: The percent of graduates who scored at or above the criterion score on the TAKS, SAT, or ACT mathematics tests.</p>	Subject	Exit-level TAKS		SAT		ACT	ELA	>= 2200 scale score on ELA test AND a "3" or higher on essay	OR	>=500 on Critical Reading AND >=1070 Total	OR	>= 19 on English AND >= 23 Composite	Math	>= 2200 scale score on mathematics test	OR	>=500 on Math AND >=1070 Total	OR	>= 19 on Math AND >= 23 Composite
Subject	Exit-level TAKS		SAT		ACT														
ELA	>= 2200 scale score on ELA test AND a "3" or higher on essay	OR	>=500 on Critical Reading AND >=1070 Total	OR	>= 19 on English AND >= 23 Composite														
Math	>= 2200 scale score on mathematics test	OR	>=500 on Math AND >=1070 Total	OR	>= 19 on Math AND >= 23 Composite														

Texas Public High School College Ready Graduates

	<p>(3) Both Subjects. The percent of graduates who scored at or above the criterion score on <i>both</i> the ELA and mathematics tests for TAKS, SAT, or ACT.</p> <p>For more information about AEIS College Ready Graduates, visit the AEIS reports on the TEA website: http://ritter.tea.state.tx.us/perfreport/aeis/index.html.</p>
Economically Disadvantaged	<p>A student is designated as economically disadvantaged if he/she is eligible for free or reduced-price lunch or eligible for other public assistance as defined in the TEA's Public Education Information Management System (PEIMS) Data Standards.</p>
Ethnicity	<p>Ethnicity/race is one of the demographic characteristics reported for each student at the time of enrollment.</p> <p>In October 2007, the United States Department of Education (USDE) issued their final guidance to educational institutions on the adoption of new federal standards for collecting and reporting ethnicity and race data for students and staff. In this report, school years 2009-10 and forward are based on the new federal standard and prior years are based on the old standard.</p> <p>The categories used in this report for school years 2007, 2008, and 2009 are described in the 2008-2009 PEIMS Data Standards as:</p> <ul style="list-style-type: none"> • African American - A non-Hispanic person having origins in any of the Black racial groups of Africa. • Asian/Pacific Islander - A person having origins in any of the original peoples of the Far East, Southeast Asia, Indian subcontinent, Polynesian Islands, Micronesian Islands, Melanesian Islands, or Philippine Islands. • Hispanic - A person of Mexican, Puerto Rican, Cuban, Central or South American, or other Spanish culture or origin, regardless of race. • Native American - A person having origins in any of the original peoples of North America and who maintains cultural identification through affiliation or community recognition. • White - A non-Hispanic person having origins in any of the original peoples of Europe, North Africa, or the Middle East. <p>The categories used in this report for school year 2010 and beyond are described in the 2009 - 2010 PEIMS Data Standards as:</p> <ul style="list-style-type: none"> • Black or African American - A person having origins in any of the black racial groups of Africa. • Asian - A person having origins in any of the original peoples of the Far East, Southeast Asia, or the Indian subcontinent, including, for example, Cambodia, China, India, Japan, Korea, Malaysia, Pakistan, the Philippine Islands, Thailand, and Vietnam. • Hispanic/Latino - A person of Cuban, Mexican, Puerto Rican, South or Central American, or other Spanish culture or origin, regardless of race. • American Indian or Alaska Native - A person having origins in any of the original peoples of North and South America (including Central America), and who maintains a tribal affiliation or community attachment.

Texas Public High School College Ready Graduates

	<ul style="list-style-type: none"> • White - A person having origins in any of the original peoples of Europe, the Middle East, or North Africa. • Native Hawaiian/Other Pacific Islander - A person having origins in any of the original peoples of Hawaii, Guam, Samoa, or other Pacific Islands. • Two or more races – A person having origins in any two, or more than two, racial categories, i.e., Black or African American and White.
High School Graduates	<p>Students reported as graduating from a Texas public school through the Texas Public Education Information Management System (PEIMS). Students graduating from the Texas School for the Deaf, the Texas School for the Blind and Visually Impaired and Texas Youth Commission schools are not included.</p>
LEP	<p>Limited English Proficient or LEP refers to students who have limited English language skills. A student is identified as LEP by the Language Proficiency Assessment Committee (LPAC) according to criteria established in the Texas Administrative Code.</p>